



May 19-21, 2023

Contents

1. Event Schedule	3
2. Parking	5
3. Venues	7
3.1. Number pick up	7
3.2. Start/finish for Road events	7
3.3. Start/Finish venue for Gravel events	9
3.4. Merchandise	9
3.5. Amenities	9
3.6. Concours d'Elegance vintage bicycle celebration 2022	10
4. Route	11
4.1. Rides and timing	11
Century/Half Century	11
The Gran/Medio Fondo	11
20-mile ride	12
The Gravelón and Gravelito	12
4.2. Route maps	13
4.3. Food stops	13
4.4. Rules of the road	14
5. Medals and Awards	16
5.1. Gravelón/Gran/Medio Fondos Awards	16
5.2. Medals	17
6. Visiting Santa Fe	17
7. Photos	17
8. Sponsors and partners	18

1. Event Schedule

Time	Event
Friday, May 19	
2:00-7:00 pm	Railyard Park Community room (740 Cerrillos Rd, Santa Fe, NM 87505) Packet/Merchandise pick-up, on-site registration, and store.
Saturday, May 20	
7:00 am-8:30 am	Packet Pick-Up/Registration at Gravel Venue
8:45 am	Rider Meeting at Start Line for Gravelón and Gravelito riders
9:00 am	Gravelón and Gravelito Official start time
2:00 pm	Gravelón and Gravelito awards at the Gravel Venue
3:00 pm	SAG support stops and the routes are swept for remaining riders. Century venue closes.
2:00 pm - 7:00 pm	Packet/Merchandise pick-up, on-site registration, store and mini expo Railyard Park Community room (740 Cerrillos Rd, Santa Fe, NM 87505)
7:00 pm - 10:00 pm	Let's get together at As Above so Below (545 Camino de la Familia, Santa Fe, NM 87501)
7:00 pm	Packet pick up closes

Time	Event
Sunday, May 21	
6:00 am - 9:00 am	Packet/Merchandise pick-up, on-site registration and store Railyard Park Community room (740 Cerrillos Rd, Santa Fe, NM 87505)
6:45 am	Gran Fondo and Century tour riders report to the start line on Paseo de Peralta/Guadalupe.
7:00 am	Escorted roll out of town for Gran Fondo and Century riders . All Century riders are welcome to join in behind the Gran Fondo group start. At this time the Century course is officially open for any riders who wish to start at their own time.
7:45 am	Medio Fondo and Half-Century tour riders report to the start line on Paseo de Peralta/Guadalupe.
8:00 am	Escorted roll out of town for Medio Fondo and Half-Century tour riders. All Half-Century tour riders are welcome to join in behind the Medio Fondo group start.
9:00-10:00 am	Recommended start time for 20-mile riders.
10:00 am	Railyard Artisans Market opens in the Santa Fe Farmers Market.
10:00 am	Finish line officially opens.
10:00 am -11:15 am	Packet pick-up/Late Registration for Kid's Race (free, open to ages 5-10) (740 Cerrillos Rd, Santa Fe, NM 87505)
11:30 am-12:00 pm	Kid's Races (11:30 ages 5-6, 11:40 ages 7-8, 11:50 ages 9-10) (740 Cerrillos Rd, Santa Fe, NM 87505)
1:00 pm	Awards ceremony for the Kid's Race riders at the Water Tower.
2:00 pm	Awards ceremony for all Fondo riders at the Water Tower.

Time	Event
5:00 pm	SAG support stops and the routes are swept for remaining riders. Century venue closes.

2. Parking

ROAD EVENTS. SANTA FE RAILYARD

Saturday, May 20st

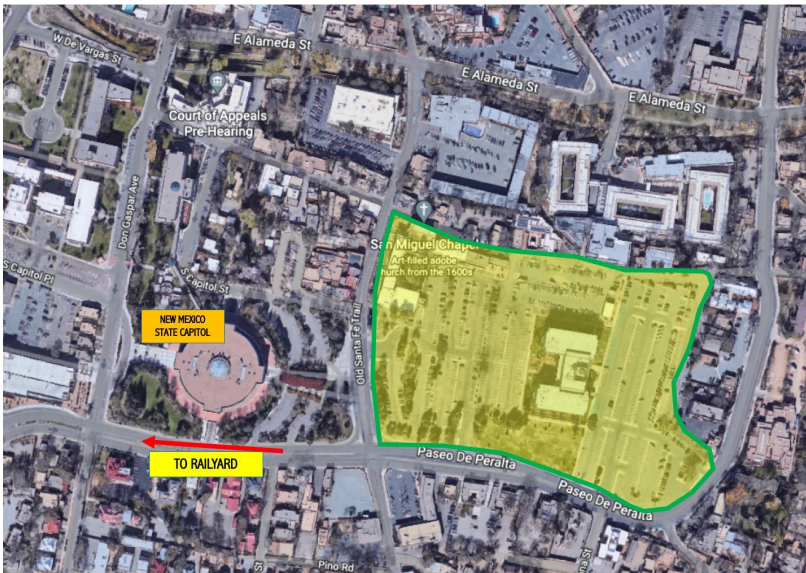
For packet pick-up, pre-order merchandise, there is paid parking in the Railyard on Camino de la Familia, and the Railyard parking garage. More info about parking in the Railyard is available at www.railyardsantafe.com/north-railyard/.

Sunday, May 21nd

0.7 miles from the start/finish line at the [Joseph M. Montoya and Harold L. Runnels buildings parking lots](#). The parking lots are located between Cordova Rd. and Alta Vista St. near the South Capitol Rail Runner station. Parking is **free** for participants. The Rail Trail runs along the west side of the parking lot and ends in the Railyard. Please use caution when crossing the St. Francis/Cerrillos Rd. intersection. Wait for the traffic lights to turn and use caution when crossing the train tracks.



0.7 miles from the start/finish in the [Capitol Lot east of the Round House and east of Old Santa Fe Trail](#). Parking is **free** for participants. The right lane of the west bound side of Paseo de Peralta will be coned off and closed to traffic beginning at 6:00am. There will also be a “pop-up” protected bike lane on the eastbound side of Paseo de Peralta from near the railyard to Old Santa Fe Trail.

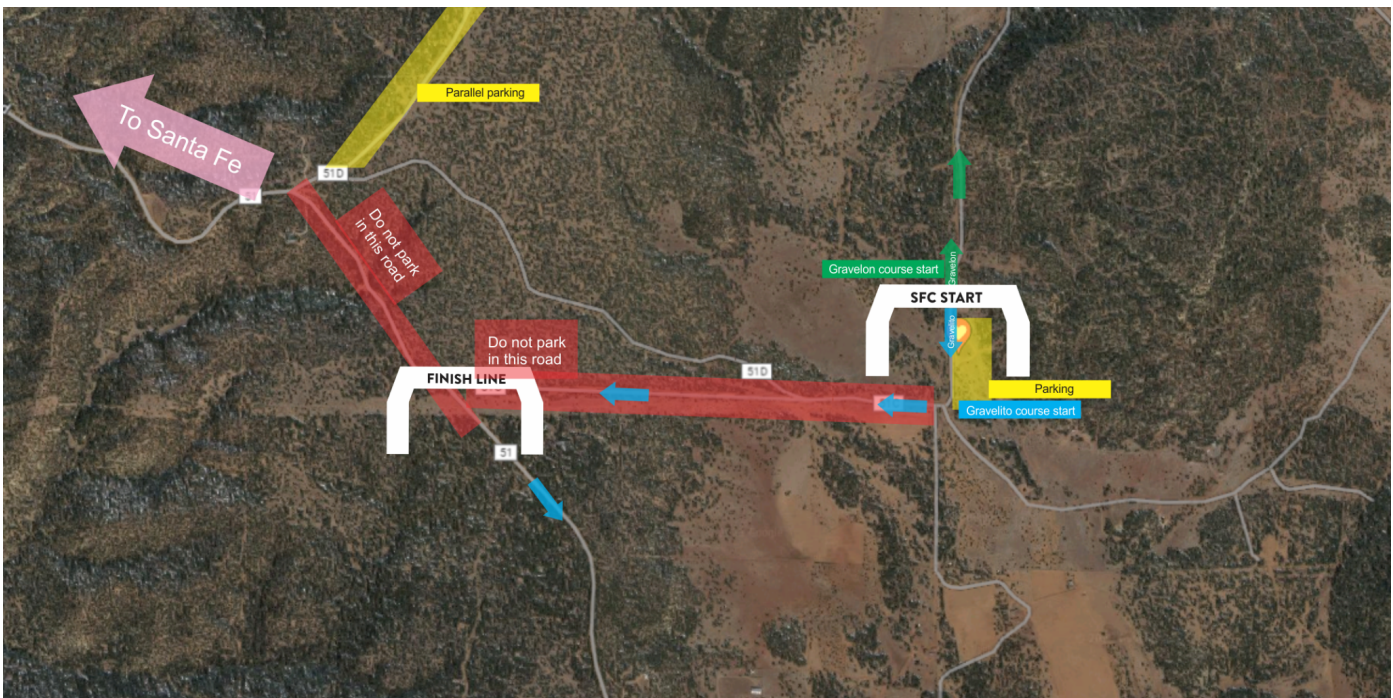


There is also **LIMITED** parking on surrounding streets and in the Railyard on Camino de la Familia and paid parking in the Railyard parking garage.

GRAVEL EVENTS. Saturday, May 20th

Packet pick-up/registration is located on CR 51C. From Cafe Fina, drive 2.3 miles southeast on Old Las Vegas highway, and turn right (south) onto Ojo de la Vaca Rd. Drive 3.6 miles south, and then turn left onto CR 51C. Parking will be along CR 51C and CR 51D and will be directed by Santa Fe Century staff.

You can find the **Gravel Venue** [here](#).



Gravel event. Venue and parking map

3. Venues

3.1. Packet pick up

Packet pick up for all events will be at Railyard Park Community room (740 Cerrillos Rd, Santa Fe, NM 87505)

- Friday, May 19th: 2:00-7:00 pm
- Saturday, May 20th: 2:00-7:00 pm
- Sunday, May 21st: 6:00 am – 9:00 am

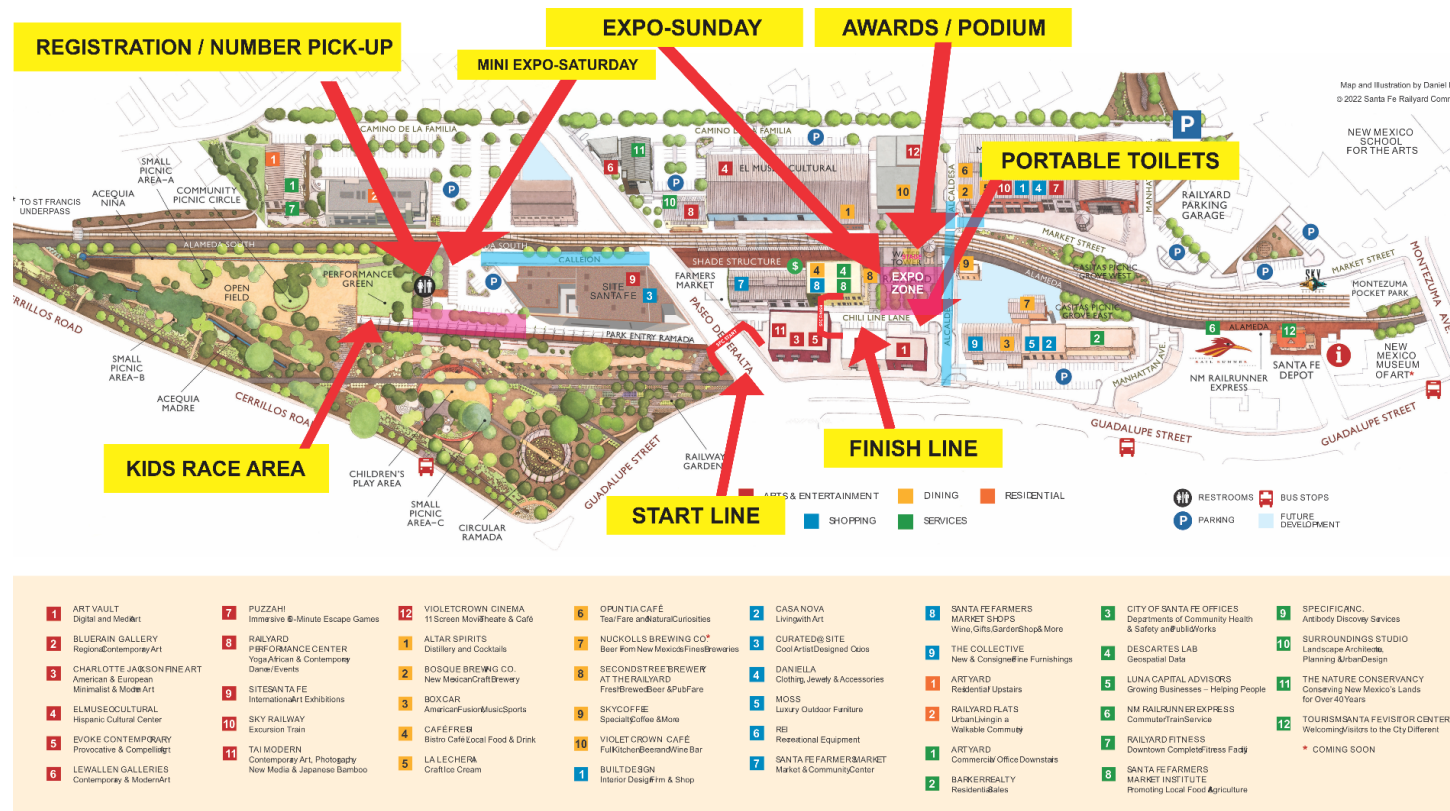
For gravel events only, there is number pick up at the gravel venue:

- Saturday, May 20th: 7:00-9:00 am

Pre-ordered merchandise will be available for pick up during packet pick up on 5/19, 5/20 and until 7:00 pm and Sunday at the SFC tent in the Railyard Plaza.



3.2. Start/finish for Road events



Map of the Road events venue

Century, Half-Century, and Gran and Medio Fondo riders will all start on Paseo de Peralta near the intersection with Guadalupe St. The route heads east on Paseo de Peralta for 0.6 miles and then right on Old Santa Fe Trail.

When riders make the left turn onto Paseo de Peralta from Old Santa Fe Trail for the finish, they will have the entire right lane of Paseo de Peralta to themselves as it will be coned off and closed to cars. The finish line will be on Chili Line Lane, just past Guadalupe St.

Find the Start line [here](#).

Find the finish line [here](#).



Twenty mile riders will leave the Railyard heading east on Paseo de Peralta then turning right onto Old Santa Fe Trail. From Old Santa Fe Trail the route makes its way to Old Pecos Trail, then turns left to Old Las Vegas Hwy.

Start times are below:

Century and Gran Fondo Start Time

- 6:45 am riders' meeting. 7:00 escorted roll out neutral start. Century tour riders are asked to line up behind Gran Fondo riders. Please note that if the field strings out, police may not be able to hold traffic lights for riders in the very back of the pack.

Half-Century and Medio Fondo Start Time

- 7:45 am riders' meeting. 8:00 escorted roll out neutral start. Half-Century tour riders are asked to line up behind Medio Fondo riders. Please note that if the field strings out, police may not be able to hold traffic lights for riders in the very back of the pack.

20-mile tour Start Time

- Recommended start time of 9:00-10:00 am.

All rides will finish on Chili Line Lane in the Railyard. Finisher medals and valeted gear can be claimed just past the finish line. The finish line will officially open at 10:00 am.



3.3. Start/Finish venue for Gravel events

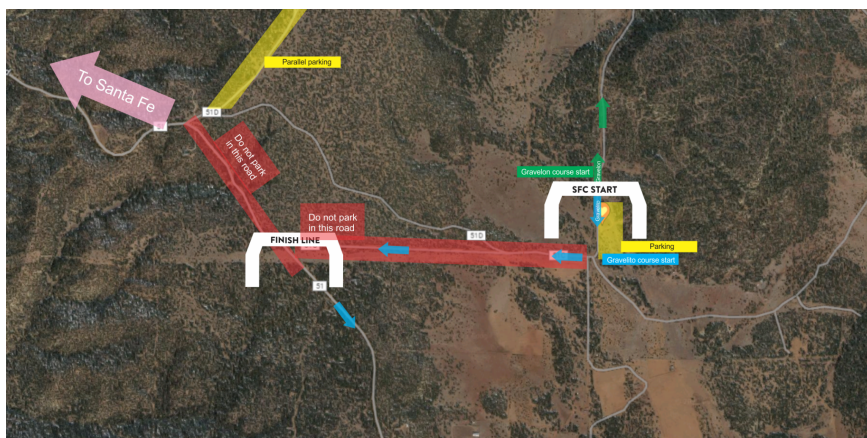
The venue for the gravel rides is located about 25 minutes SE of Santa Fe, near the intersection of CR 51c with FS 326. From Cafe Fina, drive 2.3 miles southeast on Old Las Vegas highway, and turn right (south) onto Ojo de la Vaca Rd. Drive 3.6 miles south, and then turn left onto CR 51C.

Find the Gravel venue [here](#).

Gravel event Start Time:

- 8:45 am riders' meeting, 9:00 am start.

There will be number and merchandise pickup, late registration and merchandise for sale at the gravel venue from 8-10 am. Awards for the Gravelón Fondo will take place at the [gravel venue](#) at 1 pm.



3.4. Merchandise



Santa Fe Century merchandise is available for pickup at the Railyard Community room, Friday May 19th and Saturday May 20th from 2-7 pm, as well as Sunday from 6 am until 5 pm at the Railyard plaza. **Gravel riders only may pick up their merchandise at the Railyard community room.** If you are unable to attend the event and purchased merchandise, send an email to ride@santafecentury.com by 5/20/23 and we will make arrangements with you to ship your merchandise to you for a \$12 fee.

3.5. Amenities

When riders finish they will be greeted by a festive atmosphere. There will be food trucks parked near the finish line and riders will have a number of choices for food and refreshment from the many restaurants and breweries in the Railyard. We will have porta potties near the start and finish lines. There will also be bike parking under the Railyard shade structure so riders can park their bikes while eating/drinking nearby.

Be sure to check out the Santa Fe Farmers' Market on Saturday and the Railyard Artisans' Market on Sunday!

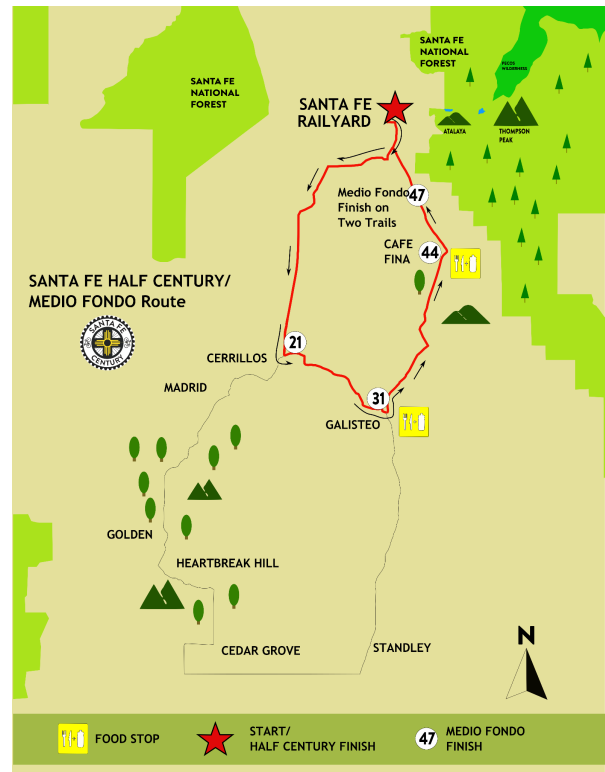
<https://santafefarmersmarket.com/>

4. Route

4.1. Rides and timing



Santa Fe Century/Gran Fondo Route



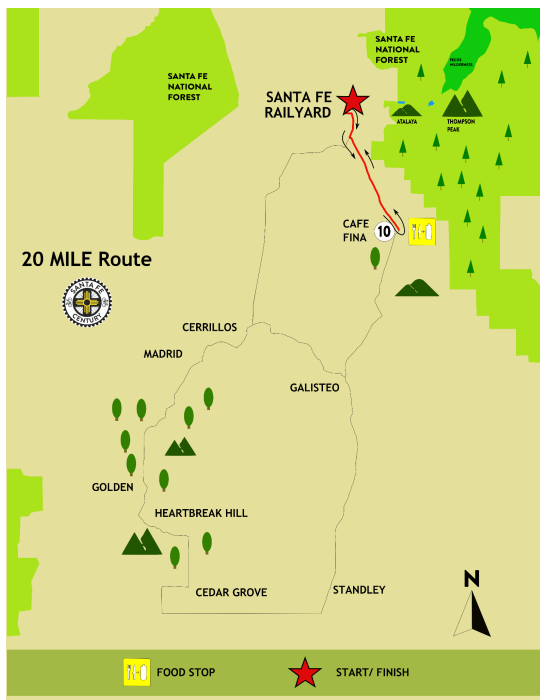
Half-Century/Medio Fondo Route

Century/Half Century

In 2023, we are celebrating the 37th edition of the Santa Fe Century! Starting and finishing in downtown Santa Fe, the Century (106 miles with about 5,500' of climbing) and the Half-Century (54 miles with about 3,000' of climbing) feature grasslands, high-desert and mountains emblematic of northern New Mexico.

The Gran/Medio Fondo

The "race" within the Century/Half-Century! All Gran and Medio Fondo riders will be timed using a chip attached to their seat post. **Please do not fold or alter the number plate or you risk not getting timed.** The timing mat/finish line for Gran and Medio Fondo riders is on Two Trails Rd. off of Old Las Vegas Hwy and 3.5 miles past the Cafe Fina rest stop. After crossing the timing mat and finishing the race portion of the event, proceed back to Old Las Vegas Hwy and continue to the Railyard finish on Chili Line Lane to claim your finishers medal. The timed finish line will close at 4:00 pm.



20-mile ride

There is no mass start for the 20-mile ride. Riders are encouraged to start no earlier than 9:00 am and no later than 10:00 am. The route is an out-and-back that shares the starting miles with the Century and Half-Century, before turning left onto Old Las Vegas Highway. The turnaround point and only food stop is located at Cafe Fina. The route map is online here: <https://www.santafecentury.com/20-mile-ride/>

20-mile Ride Route

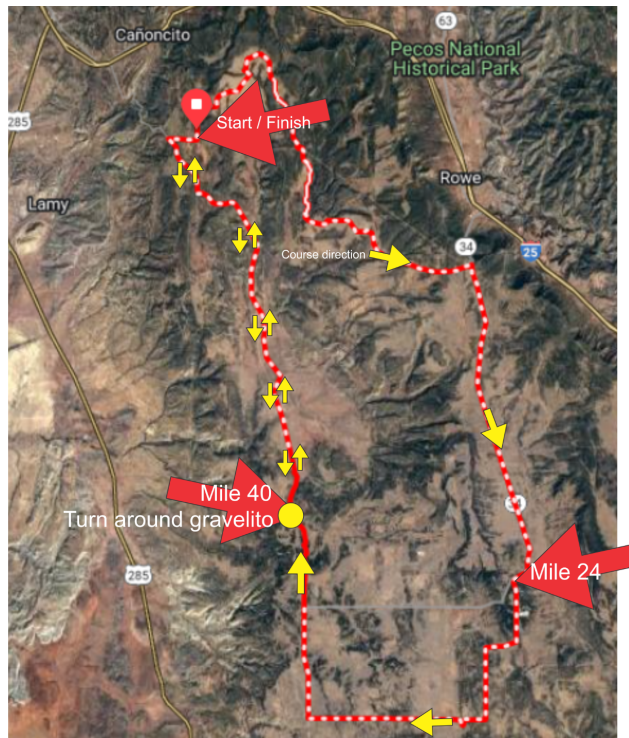
The Gravelón

The “race” within the Gravelón! for 2023, the Gravelón starts and ends on Rowe Mesa just south of Santa Fe. This route features rolling gravel roads of the mesas and high desert just south of the terminus of the Rockies.

All Gravelón riders will be timed using a chip attached to their seat post. **Please do not fold or alter the number plate or you risk not getting timed.** The Gravelón timing will finish just before the intersection of CR 51C with Ojo de la Vaca road. **Please do not race along CR 51C back to the start venue.** Please continue to the Gravel venue to receive your finishers medal. The timed finish line will close at 3:00 pm.

Gravelito

These gravel routes start and end on Rowe Mesa just south of Santa Fe. These routes feature rolling gravel roads of the mesas and high desert just south of the terminus of the Rockies. You can find a map for the Gravelón and



Gravel Routes

4.2. Route maps

Maps and turn-by-turn directions, and .gpx files for transfer to GPS devices may also be viewed/downloaded and online at <https://www.santafecentury.com/maps/>. All routes will be well signed, especially at major turns.

4.3. Food stops

The Santa Fe Century has six food stops along the Century route, two along the Half-Century route, and a single food stop along the 20 mile route. There are also two food stops for the Gravelón and a single food stop for the Gravelito. They all will be stocked with packaged food (chex mix, trail mix, granola bars), peanut butter/jelly sandwiches and fresh fruit (bananas and oranges). All stops will have water and Gatorade. Rest stops will also have porta potties, hand sanitizer, and basic bike tools and/or a mechanic. Please do not rely solely on rest stops for your food needs throughout the ride. It is a good idea to carry some of your own food with you, that you are used to and have trained with, to ensure your nutritional needs are being met.

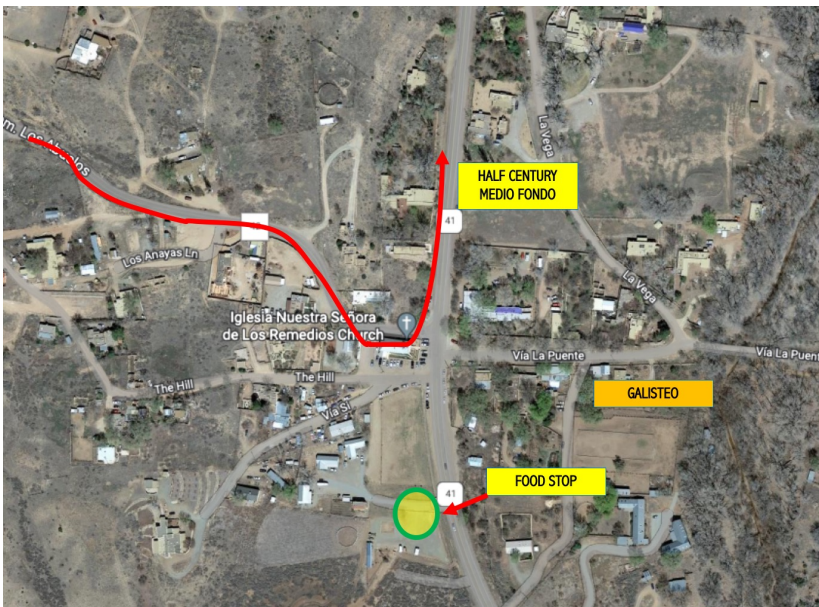
To allow time for all of the food and equipment to be delivered to the rest stops on Sunday morning, they each have an official opening time. If you plan to start your ride before the official start times, please plan accordingly. Rest stop closures are approximate and are based on our 5:00 pm event closure and when the last rider is estimated to pass the stop.

Gravel Rest stop #1 (13 miles/38 miles) - Officially open 9:30 am- 2:00 pm

Gravel Rest stop #2 (22 miles) - Officially open 9:30 am- 1:00 pm

Food Stop	Food stop officially open	Rest stop closes (approximate)
Turquoise Trail Fire Station (20 miles)	7:30 am	11:00 am
Heartbreak Hill (43 Miles) FLUIDS ONLY	8:00 am	12:00 pm
Cedar Grove (50 miles)	8:30 am	1:00 pm
Stanley (65 miles)	9:30 am	2:00 pm
Galisteo (83 miles/31 miles)	8:30 am	3:30 pm
Cafe Fina/Pete's Stop* (96 miles/44 miles)	8:30 am	4:00 pm
*Named for longtime friend of the Century, Pete Martinez, who passed away in April 2021. Pete managed this rest stop for the Civitan Club for many years before his passing.		

Half-Century riders, please note that the Galisteo food stop is located a few hundred feet off course. When you reach the left turn onto HWY 42 in Galisteo, the food stop will be to your right (see below).



4.4. Rules of the road

Helmets meeting **CPSC standards are mandatory** for all Santa Fe Century road, gravel and kids events. **For your safety, no aero bars or any other forward pointing handlebar extensions will be allowed on either of the timed rides (Medio Fondo and Gran Fondo).**

There will be SAG support out on the course in the event a rider encounters a problem in between rest stops. Please be courteous to local traffic and drivers. New Mexico State law allows riders to ride two abreast. Please use common sense and be safe! We recommend riding single file in traffic.

The yellow line rule will be in effect throughout the entire course. Do not cross the yellow line. Riders must follow all traffic laws, including stopping at stop signs and traffic lights, unless law enforcement directs you to do otherwise.

In case of injury, medical assistance is available from the fire districts along the routes. If it is a medical emergency, dial 911. We will be periodically monitoring our email, ride@santafecentury.com, for those who need to communicate with us during the ride. However, be aware that there are areas along the route that do not have cell phone service.

Please follow these common sense practices during the start and throughout the ride. Failure to follow these practices may result in your disqualification or being barred from future events.

- **DO NOT PASS THE POLICE ESCORT OUT OF TOWN.**
- For your safety, no aero bars or any other forward pointing handlebar extensions will be allowed on either of the timed rides (Medio Fondo and Gran Fondo).
- Do not fight for position when the peloton is going through town. The race will not be won/lost in the first 12 miles.
- Do not make intentional physical contact with other riders. No elbows, shoving, headbutting etc.
- The yellow line rule is in effect. Do not cross the yellow line or you will be disqualified.
- Unless an intersection is stopped by law enforcement, do not roll stop signs or traffic lights. Stay heads up and follow all traffic laws unless instructed by law enforcement that it is OK to proceed.
- Ride no more than two abreast after the police escort ends.
- Ride heads up and call out hazards.
- Littering is prohibited. Keep your own trash or use rest stop trash cans.

If the police escort gets ahead of riders, maintain a steady, slow speed of approximately 15-20 mph.

Use caution at the roundabout at the intersection of Arroyo Chamiso and Botulph Rd. about 3 miles from the start line (see below).



Arroyo Chamiso and Botulph Roundabout Intersection

5. Medals and Awards

5.1. Gravelón/Gran/Medio Fondos Awards

Gravelón Fondo riders must pick up their number with an affixed timing chip, at the Railyard during packet pick up on Friday 5/19 from 2-7 pm or Saturday 5/20 at the Gravel venue from 7-8:45 am.

Gran and Medio Fondo riders must pick up their number with an affixed timing chip, at the Railyard during packet pick up on Friday 5/19 or Saturday 5/21 from 2-7 pm, or Sunday 5/21 starting at 6 am.

There is a cash prize purse for the Gran/Medio Fondos. Prize money will be awarded to the top 5 overall in each race with equal payouts for men and women.

Overall Cash Prizes		
	Gran Fondo	Gravelón/Medio Fondo
	Men/Women	Men/Women
1st	\$ 170.00	\$ 110.00
2nd	\$ 110.00	\$ 100.00
3rd	\$ 100.00	\$ 90.00
4th	\$ 90.00	\$ 80.00
5th	\$ 80.00	\$ 70.00

Age group awards

Prizes/medals will be given to the first 3 finishers in every age group for men and women. The top 5 overall will be excluded from age group awards for the Gran/Medio/Gravelón Fondos. Age groups are divided into the following groups: 19 & under 20 – 29, 30 – 39, 40 – 49, 50 – 59, 60 – 69, 70+. The Santa Fe Century reserves the right to combine categories in the event of low participation.

Award ceremonies

The awards ceremony for the Gravelón Fondo will take place Saturday May 21st at 1 pm at the Gravel venue, awards for Gran/Medio Fondos will start at 2:00 pm Sunday at the stage next to the Water Tower in the Railyard. **Riders must be present to claim prizes, no exceptions!**

Gravelón start

There is a **mandatory riders meeting for all Gravelón Fondo riders at the Gravel venue at 8:45 am**. The start will be at 9:00 am. The first 0.8 miles will be neutral until after the turn onto Ojo de la Vaca road.

Gran/Medio Fondo starts

There is a **mandatory rider meeting at 6:45 am** for the Gran Fondo, and a **mandatory rider meeting at 7:45 am** for the Medio Fondo at the start line at the intersection of Paseo de Peralta and Guadalupe. There will be a **NEUTRAL START** from the railyard until the intersection of HWY 14 and HWY 599, 12 miles after the start.

There will be a “pop-up” protected bike lane on the eastbound side of Paseo de Peralta. This means there will be cones in the road extending slightly into the right-hand land. Use caution and stay to the left of the cones, out of the bike lane, if you are in the main escort group.



5.2. Medals

Finishers for all categories will receive a medal at the finish line in the Railyard or at the gravel venue. You must claim your medal in person in the Railyard or gravel venue.

6. Visiting Santa Fe

Santa Fe is a world-famous tourist destination. Check out <https://www.santafe.org/> for more ideas on how to spend Century weekend.



Weather

The weather in mid-May is usually excellent with high temps in the 60s and 70s and lows in the 40s, although it can be windy. The temperature may dip below 40 at the start. While clothing choice is a personal preference, a light wind jacket, long-fingered gloves, and a hat will go a long way to keep you warm for the beginning of the ride. Riders should check the weather the day before the event.

Altitude

Santa Fe is at 7,000 feet. That is almost a mile and a half above sea level! If you live at sea level or a significantly lower elevation, please allow a couple of days, if possible, for your body to adjust to the high altitude. Our humidity level is also very low, which is why we have the beautiful blue skies. But visitors need to drink more water than usual to stay hydrated.

7. Photos

Lobo Photo Images is proud to be the official photographer of the Santa Fe Century. Your photos will be taken out on the course as well as at the finish. On the course you will see a "Photo Ahead" sign roughly 1/4 mile before the

shoot site, so prepare yourself and give them a smile! When your photo is taken, you will see a large digital clock - take note of the time so you can find your images online after the ride. When your photo is taken at the finish, just take note of the time you finished. Riders will be able to search by rider number (so it's important that it's visible) or by time (the old fashioned way if they can't read the rider number).

Images will be posted as quickly as possible, approximately 3-4 days after the event. For a fee you can order photos and photo products (like coffee mugs and mouse pads with your picture). **The photos are not posted by the Santa Fe Century, so please be patient and wait until Lobo Photos has time to edit their shots; we hope you get a great shot of yourself!**

8. Sponsors and partners

The Santa Fe Century wouldn't be possible without the help from our sponsors, partners, and volunteer groups. A special thanks goes out to everyone that helped make this event a success!!

- Barker Realty, <https://www.santaferealestate.com/>
- Bike Santa Fe, <https://www.bikesantafe.org/>
- Santa Fe Railyard Community Corporation, <https://sfrailyardcc.org/>
- City of Santa Fe, <https://www.santafenm.gov/>
- City of Santa Fe Police Department
- Santa Fe County, <https://www.santafecountynm.gov/>
- New Mexico State Police
- REI, <https://www.rei.com/stores/santa-fe.html>
- BTI, <https://www.bti-usa.com/>
- Santa Fe Youth Shelters, <https://youthshelters.org/>
- Rob and Charlie's, <https://www.robandcharlies.com/>
- New Mexico Touring Society, <https://www.nmts.org/news.php>
- Mobile Bike Works, <https://www.mobilebikeworkssantafe.com/>
- Mellow Velo <https://www.mellowvelo.com/>
- Michael Anaya
- New Mexico Bike N Sport, <https://www.nmbikensport.com/>
- Café Fina, <https://www.cafefinasantafe.com/>
- Broken Spoke, <https://brokenspokesantafe.com/>
- Civitan International, <https://santafecivitan.weebly.com/about.html>
- Pecos Trail Inn, <https://www.thepecostrailinn.com/>
- Presbyterian Santa Fe Medical Center, <https://santa-fe-medical-center.phs.org/Pages/default.aspx>
- Squirt Cycling Products, <https://squirtcycling.us/>